

INSTRUCTION MANUAL  
**CZ 122 SPORT**



  
ČESKÁ ZBROJOVKA

**Before handling the pistol read this manual carefully and observe the following safety instructions.**

Improper and careless handling of the pistol could result in unintentional discharge and could cause injury, death or damage to property. The same consequences can be caused by any unauthorized modifications or adjustments, corrosion, or use of non-standard or damaged ammunition. In these cases the manufacturer shall not be responsible in any manner whatsoever for the resultant consequences.

Before leaving the factory this pistol was tested, carefully inspected, and packed. CZ cannot accept responsibility for product handling while in transit, or upon leaving the factory. Therefore, please examine this pistol carefully at the time of purchase to ensure that it is unloaded and undamaged.

This instruction manual should always accompany this pistol and that even in the case of the loan or sale of this pistol.

## **CONTENTS**

SAFETY INSTRUCTIONS	14
PISTOL DESCRIPTION AND TERMINOLOGY	15
OPERATING INSTRUCTIONS	16
Ammunition	16
Removal of the Magazine	16
Magazine Loading	16
Pistol Loading	16
Reloading During Shooting	17
Unloading the Pistol	17
Engaging the Safety Mode	17
Sight Adjustment	17
MAINTENANCE INSTRUCTIONS	18
Stripping for Cleaning - Disassembly	18
Firing Pin Disassembly	18
Magazine Disassembly	18
Cleaning the Pistol	19
Cleaning the Barrel Bore and the Cartridge Chamber	19
Cleaning of Other Pistol Parts	19
Preserving	19
ILLUSTRATION AND LIST OF PARTS	20
TROUBLESHOOTING, CAUSES AND REMEDIES	22
TECHNICAL SPECIFICATIONS	23
LIST OF ILLUSTRATIONS	23

## SAFETY INSTRUCTIONS

Always follow the safety instructions for your safety and the safety of others.

1. Always handle your pistol as if it were loaded.
2. Never point your pistol at anything you do not intend to shoot.
3. Never take anyone's word that a gun is unloaded.
4. Always make sure that your pistol is not loaded before laying it down, or handing it to another person.
5. Always keep and carry your pistol empty, with the hammer forward except when you intend to shoot.
6. Never abuse your pistol by using it for any purpose other than shooting.
7. Never leave the pistol cocked and ready to fire unattended.
8. Before loading your pistol be sure that barrel bore, chamber, and action are clean and clear of obstructions. After shooting clean a dirtied pistol as soon as possible.
9. Always use only clean, dry, original high quality commercially manufactured ammunition, which is appropriate to the caliber of your pistol.
10. Never drink alcoholic beverages or take drugs before or during shooting.
11. Always wear safety glasses and ear protection when shooting.
12. Always keep the safety on when the pistol is loaded and cocked, until you are ready to fire.
13. Always keep clear and keep others clear of the ejection port.
14. Never squeeze the trigger or put your finger in the trigger guard until you are aiming at a target and ready to shoot.
15. Always be absolutely sure of your target, and the area behind it, before you squeeze the trigger. A bullet could travel through or past your target up to several hundreds of meters.
16. Never shoot at a hard surface such as rock, or a liquid surface such as water.
17. Never fire your pistol near an animal unless it is trained to accept the noise.
18. Never indulge in "horseplay" while holding your pistol.
19. Failure to fire: always hold the pistol, keeping it pointed towards the target, or a safe open area and wait 30 seconds when the pistol fails to fire. If a hangfire (slow ignition) has occurred, the round will fire within 30 seconds. If the round does not fire, remove the magazine, eject the round and examine it; if the firing pin indent on the round is light, or non-existent, have the pistol examined by a competent gunsmith.
20. Always make sure your pistol is not loaded before cleaning, storing or traveling.

21. Always keep and store your pistol and ammunition in separate locked receptacles out of reach and sight of children and untrained people.
22. Never alter any parts of your pistol as the safety and proper function of your pistol could be seriously compromised.
23. Always be aware that corrosion, use of damaged ammunition, dropping the pistol on hard surfaces or other "coarse treatment" could cause a damage you may not see. If something like this happens allow the pistol to be examined and tested by a competent gunsmith.

## PISTOL DESCRIPTION AND TERMINOLOGY

The names of basic pistol parts used in this Instruction Manual are presented in Fig. 1. Nomenclatures of all CZ 122 SPORT parts are presented in the section *Illustration and List of Parts*.

The CZ 122 SPORT pistol is a semi-automatic handgun with an unlocked (blowback) breech designed for aimed sport and hobby shooting up to 50 m distances. The CZ 122 SPORT is produced in two versions with magazine release located either on side or at the bottom of the grip. Characteristic features are:

- attachment of the rear sight and front sight onto the rib which is firmly fixed to the pistol's frame and barrel substantially increases accuracy of fire
- an ergonomically shaped plastic grip allowing shooting to be carried out by the left or right hand
- a comfortable grip and balance in either hand
- high accuracy of fire
- a long service life
- high reliability
- a manual safety
- an easy to set micrometrically adjustable LPA rear sight
- a single action trigger mechanism suitable for sport shooting
- trigger with regulated slack (adjusting screw is set by the manufacturer)
- sporting hammer specially adapted for a reduced trigger pull weight
- the slide stays open after the last cartridge from the magazine has been fired

*Trigger mechanism function:*

*SA (Single Action)*

The trigger mechanism operates in a single action mode of fire. The hammer is cocked manually and then after pressing the trigger the pistol is fired. The trigger pull weight is low. After each discharge the hammer remains cocked.

## OPERATING INSTRUCTIONS

### Ammunition

Use only factory-manufactured standard ammunition of appropriate caliber, which are in compliance with CIP regulations (International Proof Commission for Firearms) or SAAMI (Sporting Arms and Ammunition Manufacturers' Institute Inc. of the United States). The use of other cartridges could damage the handgun or cause malfunctions or injury to the shooter. Also the use of HV (High Velocity) type cartridges is not recommended for the risk of higher wear of some parts which could have adverse effect on the service life of the handgun.

### Removal of the Magazine

With the version featuring a magazine catch on the side of the pistol, grasp the pistol with your right/left hand and using a thumb/middle finger depress the magazine catch placed on the left side of the pistol. Use the other hand to hold the magazine, and after its release, remove the magazine (Fig. 2).

With the version featuring a magazine catch on the grip butt, grasp the pistol with one hand and with the thumb of the other hand push the magazine catch placed at the butt part of the grip to the rear (Fig. 3). Using the index finger of the same hand remove the magazine, holding the magazine bottom, from the pistol grip.

### Magazine Loading

With the open end uppermost, grasp the magazine in one hand. Place a cartridge on the magazine follower. Press the cartridge down and back until it touches the rear flat edge of the magazine (Fig. 4). Place the next cartridge on top of the previous cartridge and press down and back. After loading the magazine slightly tap its rear wall against a fixed flat surface. This action will ensure the correct seating of individual cartridges relative to each other in the magazine, and the correct functioning of the weapon when firing.

The number of cartridges can be visually checked through a slot in the left side of the magazine. Do not try to exceed the magazine capacity - doing so can cause a feeding failure.

### Pistol Loading

CAUTION:

ALWAYS MAKE SURE THE PISTOL IS POINTED IN A SAFE DIRECTION WHEN LOADING!

Insert a loaded magazine and ensure that it has engaged the magazine catch.

Hold the pistol by the grip with one hand and with the thumb and index finger grasp the serrated finger grips on both sides of the slide. Retract the slide to the stop and allow it to snap forward (Fig. 5). This procedure cocks the hammer and inserts a cartridge into the chamber. The pistol is now ready to fire. If you do not intend to fire immediately ensure the pistol safety as described further in the section *Engaging the Safety Mode*.

When cocking the slide, be cautious not to get hurt by the rear sight placed on the rib over the slide.

## Reloading During Shooting

When the last cartridge has been fired the slide will stay to the rear. Remove the emptied magazine and replace it with a loaded one. Thumb down the slide stop with the shooting hand (Fig. 6), or with the other hand draw back the slide and allow it to snap forward (Fig. 5). The pistol is again loaded and ready to fire.

## Unloading the Pistol

**ALWAYS MAKE SURE THE PISTOL IS POINTED IN A SAFE DIRECTION!**

- remove the magazine
- draw back the slide and verify the last cartridge has been extracted from the chamber and ejected
- let the slide snap fully forward
- using thumb and index finger of one hand grasp the hammer, with the other hand depress the trigger while cautiously and slowly allowing the hammer to move forward until it rests against the slide

**CAUTION:** Do not pointlessly dry fire (without cartridges) the pistol so as to avoid damage to the edges of the cartridge chamber!

## Engaging the Safety Mode

After cocking the hammer into its rear position shift the safety by pressing it from the right side of the frame (Fig. 7) until the red mark (in its slot) is covered. The safety in this position blocks the trigger mechanism and prevents pulling of the trigger. It is possible to shift the safety to a "Safe" position, even when the hammer is on the safety notch. However, it is not recommended that the safety be engaged while in this state, because forced cocking of the hammer could damage trigger mechanism. It is advisable to apply the safety especially in case of short-term interruption of shooting.

Please remember that the safest way to secure a pistol is to unload it and store it in a safe place!

## Sight Adjustment

The pistol was sighted in at the manufacturing plant at a distance of 25 m so that the mean point of impact approximately conforms to the point of aim.

Corrections for windage and elevation can be carried out through the use of the micrometer screws of the adjustable rear sight. The screw for elevation correction is marked with an arrow and the UP word; the screw for windage correction is marked with an arrow and the letter R (RIGHT).

**ATTENTION** - only the right hand screw slot is designed for use in corrections. The slot on the left side screw is intentionally deformed so as not be fit for a screwdriver. The screws are fixed by spring loaded ball bearings, which create the divisions, turning of the screw by one division, shifts the point of impact at 25 m approximately 0,6 cm.

## MAINTENANCE INSTRUCTIONS

### Stripping for Cleaning - Disassembly

POINT YOUR PISTOL IN A SAFE DIRECTION!

1. Remove the magazine.
2. MAKE SURE THERE IS NO CARTRIDGE IN THE CHAMBER!
3. Keep the hammer at the front (rest) position to be placed against the slide. With one hand grasp the pistol from above, using the fingers to hold the slide such that the slide cannot move. Using thumb and index finger of the other hand, shift the serrated grip surfaces of the insert rearwards until they touch the slide (Fig. 8). This loosens the connecting element and it will be possible to take it out. Take care not to lose it!
4. Cock the hammer. Grasp the slide by its grooved part and retract it until it is completely removed from its guiding rails on the pistol's frame.

NOTE TO RE-ASSEMBLY:

Be sure the insert is placed right in the center during the slide remounting and cannot be damaged by the slide.

No further disassembly is needed for routine maintenance. When a great number of cartridges has been fired, it is advisable to also clean firing pin and magazine.

### Firing Pin Disassembly

Using a punch, drift the roll pin out of the pistol slide (Fig. 9), and remove the released firing pin with its spring from the slide. Be very careful at this stage of the disassembly procedure, as the firing pin is spring-loaded and could fly out, getting lost or even causing injury.

NOTE TO RE-ASSEMBLY:

The roll pin must be positioned with the joint facing upwards.

### Magazine Disassembly

Using a punch drift the roll pins connecting the magazine base with the magazine body out. Be careful that the magazine base is not ejected by the spring and could thus cause an injury. After removing magazine base and magazine spring, shift the follower to the position where the follower pin will be co-axial with the hole on the bottom part of the slot. In this position take the follower pin out of the magazine body and shift the follower out.

CAUTION:

Never attempt to disassemble your pistol further than recommended. Should your pistol require adjustment or repair be sure the task is entrusted to a competent gunsmith!

## **Cleaning the Pistol**

Clean the pistol

- each time you use it
- if you get your pistol wet
- as soon as possible after shooting
- at least once a year in a temperate climate
- as often as once a month in a tropical climate, or other demanding environment

## **Cleaning the Barrel Bore and the Cartridge Chamber**

If the pistol has not been fired or if only a few cartridges have been fired, clean the barrel bore and cartridge chamber by the clean patch attached to the cleaning rod.

When the barrel bore is very dirty, apply a gun cleaning solution using a cleaning brush. Let the solvent act for about 10 minutes (this time may vary depending on the solvent agent being used). Then thoroughly scrub out the barrel bore. Subsequently, dry the barrel bore and cartridge chamber with a clean patch and check that all powder residues or fouling have been removed. If necessary repeat this procedure.

The cleaning rod and the brush must be inserted into the barrel bore from the chamber, to prevent wear or damage to the muzzle. Pass the brush all the way through the barrel bore before reversing the movement. If you try to change directions with the brush in the barrel, the brush could stick.

## **Cleaning of Other Pistol Parts**

Other parts of the pistol (including the external surfaces of the barrel) should be cleaned with a dry cloth, old toothbrush, brass bristle brush or a wooden scraper. Preserving oil or paraffin oil can be used for proper cleaning. Never use the agent designed for barrel bore cleaning! These solutions could remain in the joints, and after some time could cause corrosion.

Check that cloth particles or brush bristles have not become lodged in any part of the pistol.

## **Preserving**

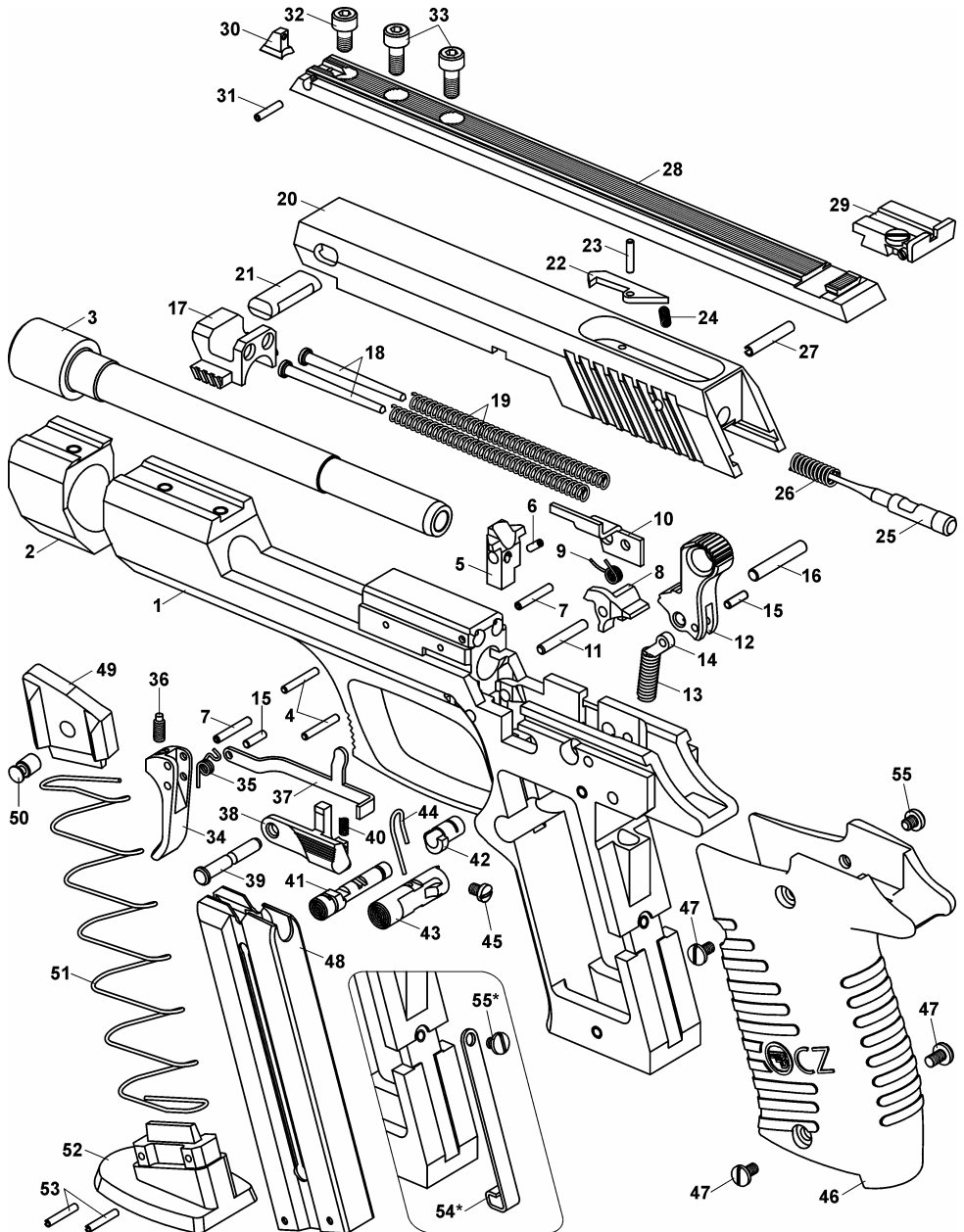
When the barrel bore, cartridge chamber, and all accessible parts are clean and dry, wipe these parts with a cloth soaked in gun oil or apply the oil in a spray. Remove all excess oil.

Before shooting always wipe the barrel bore dry. At very low temperatures remove the oil from all accessible parts or apply a lubricant prepared especially for these conditions.

Use thick preserving agents for example, preserving grease only for a long-term storage in demanding climate environments, and before any use of the pistol it must be thoroughly removed from all parts of the firearm.



ILLUSTRATION AND LIST OF PARTS



1 Frame	29 LPA Rear Sight
2 Weight	30 Front Sight
3 Barrel	31 Front Sight Roll Pin
4 Barrel Pin (2x)	32 Weight Screw
5 Ramp	33 Rib Screw (2x)
6 Ramp Roll Pin	34 Trigger
7 Trigger Roll Pin (2x)	35 Trigger Spring
8 Sear	36 Trigger Screw
9 Sear Spring	37 Trigger Bar
10 Ejector	38 Slide Stop
11 Sear Pin	39 Slide Stop Pin
12 Hammer	40 Slide Stop Spring
13 Hammer Spring	41 Safety
14 Hammer Strut	42 Sleeve
15 Trigger and Hammer Pin (2x)	43 Magazine Catch
16 Hammer Pin	44 Magazine Catch Spring
17 Insert	45 Magazine Catch Spring Screw
18 Recoil Spring Guide (2x)	46 Grip
19 Recoil Spring (2x)	47 Grip Screw (3x)
20 Slide	48 Magazine Body
21 Connecting Element	49 Follower
22 Extractor	50 Follower Pin
23 Extractor Pin	51 Magazine Spring
24 Extractor Spring	52 Magazine Base
25 Firing Pin	53 Magazine Roll Pin (2x)
26 Firing Pin Spring	54 Magazine Catch
27 Firing Pin Roll Pin	55 Magazine Catch Screw
28 Rib	

The parts marked with an asterisk (\*) are designed for the version with the magazine catch located at the grip butt.

**TROUBLESHOOTING, CAUSES AND REMEDIES**

If your pistol is properly used and maintained, malfunctions will rarely occur. However, if such a situation does occur, please observe the following instructions.

**CAUTION** - If a malfunction occurs, the possibility of unintentional discharge is substantially increased. For this reason, carefully observe the *Safety Instructions* already mentioned above. Keep the pistol pointed in a safe direction, do not turn the pistol against your body or anyone else's! Do not place your hands in front of the barrel!

It is recommendable to practice clearing of the malfunctions described below with so-called "dummy cartridges".

<b>Malfunction</b>	<b>Possible Cause</b>	<b>Remedy</b>
A round has not been fed into the chamber or the slide has not fully locked with the barrel.	Magazine is not fully inserted or is damaged. The pistol or cartridges are fouled (dirty) or too heavily greased. The use of unsuitable cartridges. Cartridge chamber edges are damaged.	Insert magazine properly or change magazine. Clean the pistol and cartridges and wipe them dry or as case may be slightly lubricate. Use only recommended ammunition. Entrust the pistol to a competent gunsmith for inspection and repair.
Misfire	Defective cartridge.  Firing pin hole fouled (dirty) or improper lubrication agent used under low temperature conditions.	Pull the trigger again. If a discharge is not initiated, follow the Safety Instructions according to point 19. Disassemble and clean the firing pin or use a low temperature lubricant.
A shot sounds "weak" combined with failure to eject the cartridge case.	The round has been activated but no powder load was inside the cartridge case, or the powder is damp.	Unload the pistol and check that the bullet is not lodged in the barrel. A subsequent shot could cause damage to the barrel.
The spent case has not been ejected.	Cartridge chamber, extractor or ammunition dirty, or unsuitable lubricant in low temperature environment.	Clean and wipe the pistol dry or lubricate lightly with a suitable agent. Use new and clean ammunition.

If you cannot clear away any malfunction in the manner described above, entrust the pistol to a competent gunsmith for inspection and repair.

## TECHNICAL SPECIFICATIONS

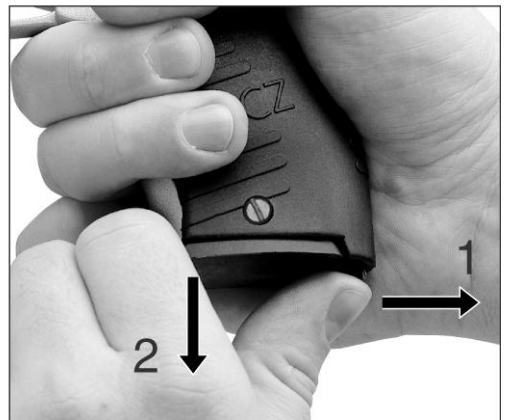
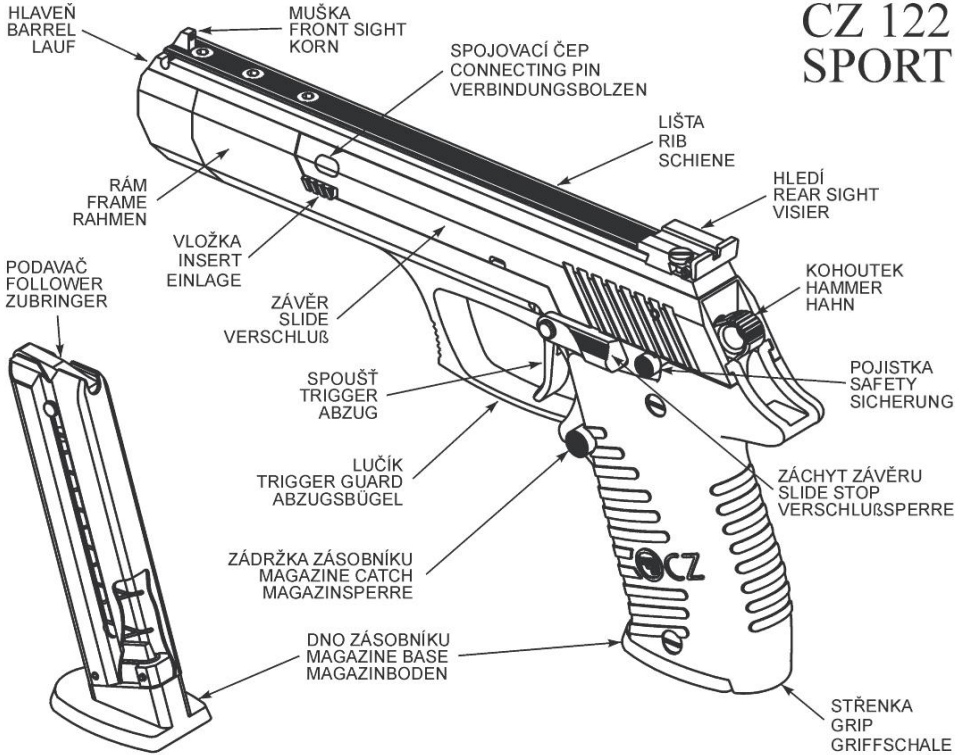
Caliber		.22 LR
Overall length	[mm]	238
Height with side magazine release	[mm]	135
Height with magazine release at the grip bottom	[mm]	140
Width	[mm]	31
Weight with empty magazine	[g]	875
Empty magazine weight	[g]	60
Barrel length	[mm]	152
Sight radius	[mm]	196
Magazine capacity	[cartridges]	10

## LIST OF ILLUSTRATIONS

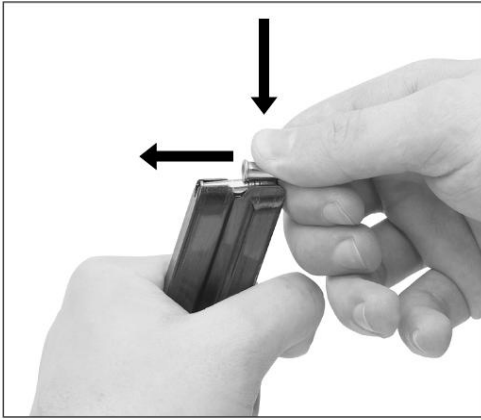
1. The Names of Basic Parts
2. Magazine removal for the version with side magazine release
3. Magazine removal for the version with magazine release placed at the grip bottom
4. Magazine loading
5. Slide release from its "rear lock - up" position by its retracting and easing it to move forwards
6. Slide release from its "rear lock - up" position by depressing slide stop
7. Shifting the safety to the "SAFETY - ON" position
8. Connecting element disassembly
9. Firing pin disassembly

The Company, reserves the right to make any changes it thinks necessary to improve its models or to meet any requirements of manufacturing or commercial nature .

# CZ 122 SPORT



3



④



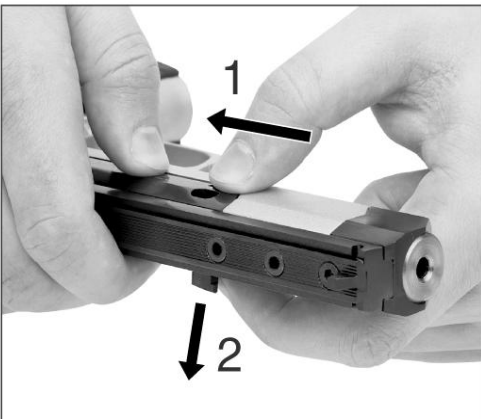
⑤



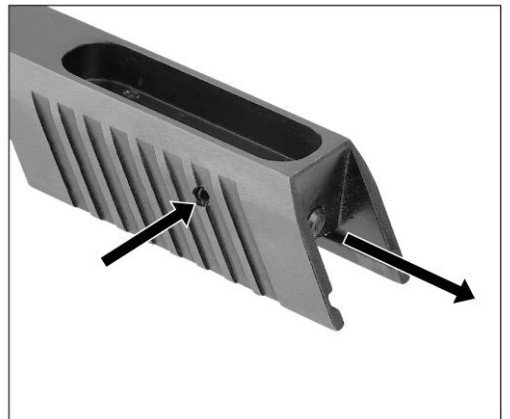
⑥



⑦



⑧



⑨